

Discharge Measurement Summary

Site name E-Canal2
Site number 01
Operator(s) TMiller
File name EastCanal_20230406_1227.ft
Comment

Start time	4/6/2023 12:27 PM	Sensor type	Top Setting
End time	4/6/2023 1:06 PM	Handheld serial number	FT2H2219029
Start location latitude	42.809	Probe serial number	FT2P2219014
Start location longitude	-118.869	Probe firmware	1.30
Calculations engine	FlowTracker2	Handheld software	1.7

# Stations	Avg interval (s)	Total discharge (m³/s)
21	40	0.6466

Total width (m)	Total area (m²)	Wetted Perimeter (m)
3.566	1.28471	4.088

Mean SNR (dB)	Mean depth (m)	Mean velocity (m/s)
32	0.360	0.5033

Mean temp (°C)	Max depth (m)	Max velocity (m/s)
7.505	0.442	0.7550

Discharge Uncertainty		
Category	ISO	IVE
Accuracy	1.0%	1.0%
Depth	0.1%	2.1%
Velocity	0.7%	2.1%
Width	0.1%	0.1%
Method	2.0%	
# Stations	2.4%	
Overall	3.3%	3.1%

Discharge equation	Mid Section
Discharge uncertainty	IVE
Discharge reference	Rated

Data Collection Settings	
Salinity	0.000 PSS-78
Temperature	-
Sound speed	-
Mounting correction	0.000 %

Summary overview

No changes were made to this file
Quality control warnings



Discharge Measurement Summary

Site name E-Canal2
Site number 01
Operator(s) TMiller
File name EastCanal_20230406_1227.ft
Comment

Station Warning Settings

Station discharge OK

Station discharge < 5.00%

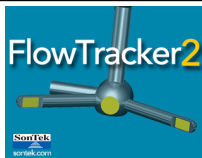
Station discharge caution

5.00% >= Station discharge < 10.00%

Station discharge warning

Station discharge >= 10.00%



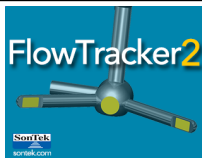


Discharge Measurement Summary

Site name E-Canal2
Site number 01
Operator(s) TMiller
File name EastCanal_20230406_1227.ft
Comment

Measurement results

St#	Time	Location (m)	Method	Depth (m)	%Depth	Measured Depth (m)	Samples	Velocity (m/s)	Correction	Mean Velocity (m/s)	Area (m ²)	Flow (m ³ /s)	%Q	
0	12:27 PM	0.610	None	0.000	0.0000	0.000	0	0.0000	1.0000	-0.0106	0.00000	0.0000	0.00	✓
1	12:28 PM	0.792	0.6	0.347	0.6000	0.208	80	-0.0106	1.0000	-0.0106	0.06355	-0.0007	-0.10	✓
2	12:30 PM	0.975	0.6	0.390	0.6000	0.234	80	0.3875	1.0000	0.3875	0.07135	0.0277	4.28	✓
3	12:38 PM	1.158	0.6	0.411	0.6000	0.247	80	0.5598	1.0000	0.5598	0.07525	0.0421	6.52	✓
4	12:40 PM	1.341	0.6	0.421	0.6000	0.252	80	0.5594	1.0000	0.5594	0.07692	0.0430	6.65	✓
5	12:42 PM	1.524	0.6	0.427	0.6000	0.256	80	0.6381	1.0000	0.6381	0.07804	0.0498	7.70	✓
6	12:43 PM	1.707	0.6	0.421	0.6000	0.252	80	0.6153	1.0000	0.6153	0.07692	0.0473	7.32	✓
7	12:45 PM	1.890	0.6	0.427	0.6000	0.256	80	0.6763	1.0000	0.6763	0.07804	0.0528	8.16	✓
8	12:46 PM	2.073	0.6	0.442	0.6000	0.265	80	0.7458	1.0000	0.7458	0.08083	0.0603	9.32	✓
9	12:48 PM	2.256	0.6	0.427	0.6000	0.256	80	0.7316	1.0000	0.7316	0.07804	0.0571	8.83	✓
10	12:49 PM	2.438	0.6	0.396	0.6000	0.238	80	0.7550	1.0000	0.7550	0.07246	0.0547	8.46	✓
11	12:51 PM	2.621	0.6	0.366	0.6000	0.219	80	0.6605	1.0000	0.6605	0.06689	0.0442	6.83	✓
12	12:53 PM	2.804	0.6	0.335	0.6000	0.201	80	0.6649	1.0000	0.6649	0.06132	0.0408	6.31	✓
13	12:55 PM	2.987	0.6	0.329	0.6000	0.198	80	0.6802	1.0000	0.6802	0.06020	0.0409	6.33	✓
14	12:56 PM	3.170	0.6	0.305	0.6000	0.183	80	0.6612	1.0000	0.6612	0.05574	0.0369	5.70	✓
15	12:58 PM	3.353	0.6	0.299	0.6000	0.179	80	0.5439	1.0000	0.5439	0.05463	0.0297	4.60	✓
16	12:59 PM	3.536	0.6	0.308	0.6000	0.185	80	0.2762	1.0000	0.2762	0.05630	0.0155	2.40	✓
17	1:01 PM	3.719	0.6	0.329	0.6000	0.198	80	0.0616	1.0000	0.0616	0.06020	0.0037	0.57	✓
18	1:03 PM	3.901	0.6	0.369	0.6000	0.221	80	0.0017	1.0000	0.0017	0.06745	0.0001	0.02	✓
19	1:04 PM	4.084	0.6	0.369	0.6000	0.221	80	0.0121	1.0000	0.0121	0.05059	0.0006	0.09	✓
20	1:06 PM	4.176	None	0.000	0.0000	0.000	0	0.0000	1.0000	0.0121	0.00000	0.0000	0.00	✓

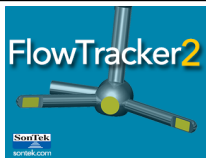


Discharge Measurement Summary

Site name E-Canal2
Site number 01
Operator(s) TMiller
File name EastCanal_20230406_1227.ft
Comment

Quality Control Settings	
Maximum depth change	50.00%
Maximum spacing change	100.00%
SNR threshold	10 dB
Standard error threshold	0.0100 m/s
Spike threshold	10.00%
Maximum velocity angle	20.0 deg
Maximum tilt angle	5.0 deg

Quality control warnings							
St#	Time	Location (m)	Method	Depth (m)	%Depth	Measured Depth (m)	Warnings
1	12:28 PM	0.792	0.6	0.347	0.6000	0.208	Large SNR Variation,SNR Threshold Variation
2	12:30 PM	0.975	0.6	0.390	0.6000	0.234	Standard Error > QC
3	12:38 PM	1.158	0.6	0.411	0.6000	0.247	Standard Error > QC
4	12:40 PM	1.341	0.6	0.421	0.6000	0.252	Standard Error > QC
5	12:42 PM	1.524	0.6	0.427	0.6000	0.256	Standard Error > QC
6	12:43 PM	1.707	0.6	0.421	0.6000	0.252	Standard Error > QC
7	12:45 PM	1.890	0.6	0.427	0.6000	0.256	Standard Error > QC
8	12:46 PM	2.073	0.6	0.442	0.6000	0.265	Standard Error > QC
9	12:48 PM	2.256	0.6	0.427	0.6000	0.256	Standard Error > QC
10	12:49 PM	2.438	0.6	0.396	0.6000	0.238	Standard Error > QC
11	12:51 PM	2.621	0.6	0.366	0.6000	0.219	Standard Error > QC
12	12:53 PM	2.804	0.6	0.335	0.6000	0.201	Standard Error > QC
13	12:55 PM	2.987	0.6	0.329	0.6000	0.198	Standard Error > QC
14	12:56 PM	3.170	0.6	0.305	0.6000	0.183	Standard Error > QC
15	12:58 PM	3.353	0.6	0.299	0.6000	0.179	Standard Error > QC
16	12:59 PM	3.536	0.6	0.308	0.6000	0.185	Standard Error > QC
19	1:04 PM	4.084	0.6	0.369	0.6000	0.221	Water Depth > QC,Boundary Interference
20	1:06 PM	4.176	None	0.000	0.0000	0.000	Water Depth > QC



Discharge Measurement Summary

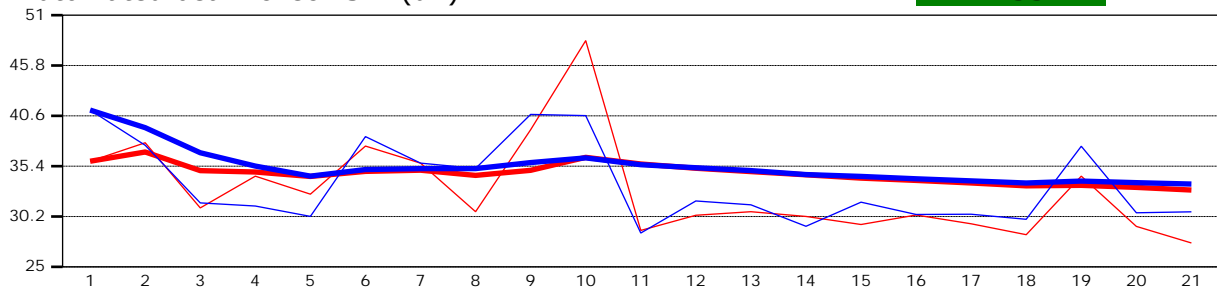
Site name E-Canal2
Site number 01
Operator(s) TMiller
File name EastCanal_20230406_1227.ft
Comment

Beam 1	
Beam 2	

Automated beam check Start time 4/6/2023 12:27:21 PM

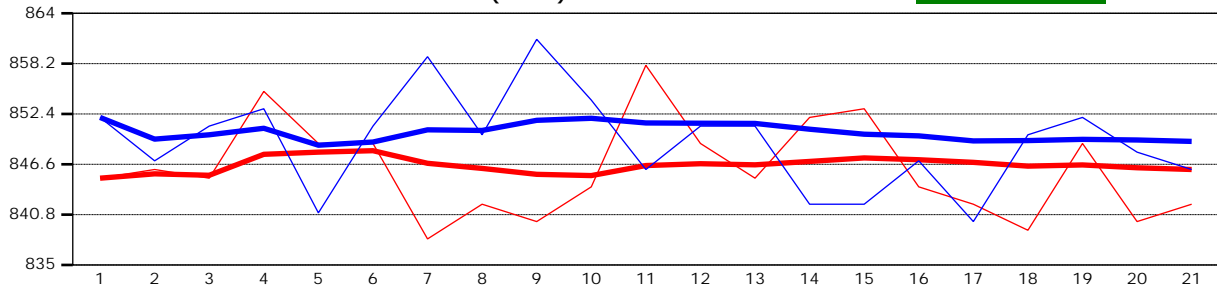
Automated beam check SNR(dB)

PASS



Automated beam check Noise level(cnts)

PASS



Automated beam check Quality control warnings

No quality control warnings



Discharge Measurement Summary

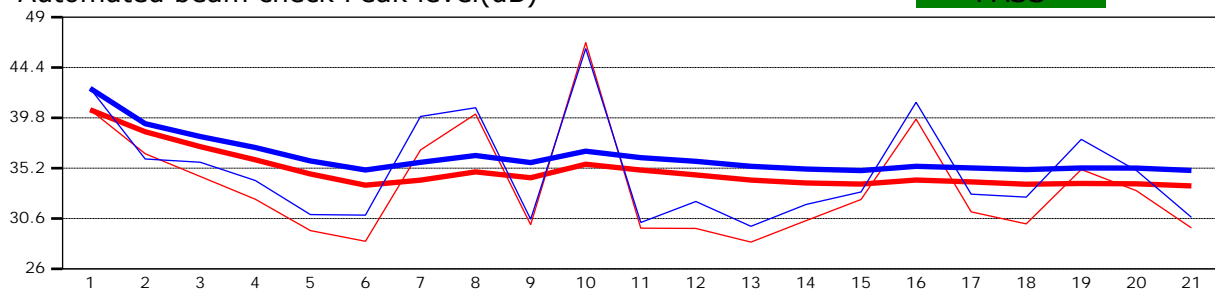
Site name E-Canal2
Site number 01
Operator(s) TMiller
File name EastCanal_20230406_1227.ft
Comment

Beam 1	
Beam 2	

Automated beam check Start time 4/6/2023 12:27:21 PM

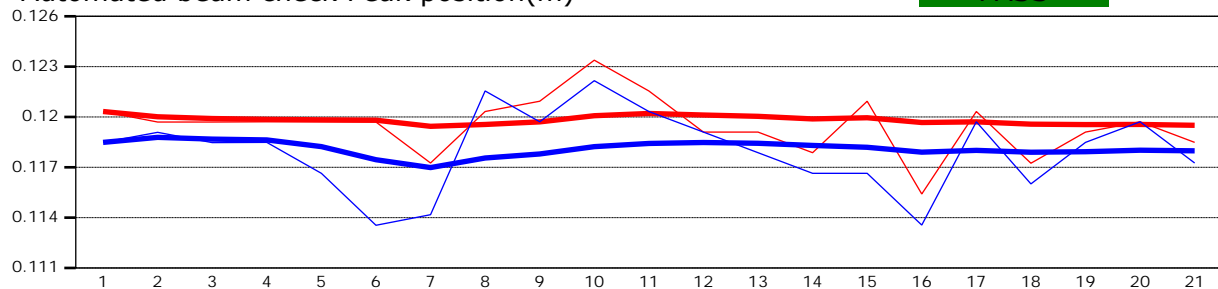
Automated beam check Peak level(dB)

PASS



Automated beam check Peak position(m)

PASS



Automated beam check Quality control warnings

No quality control warnings